

Product specification

Connector Type	8 x 4.3 - 10
Type of contact	Female
Mounting kit	Pole
Material	PVC
Operating temperature (°C)	-40 a 60

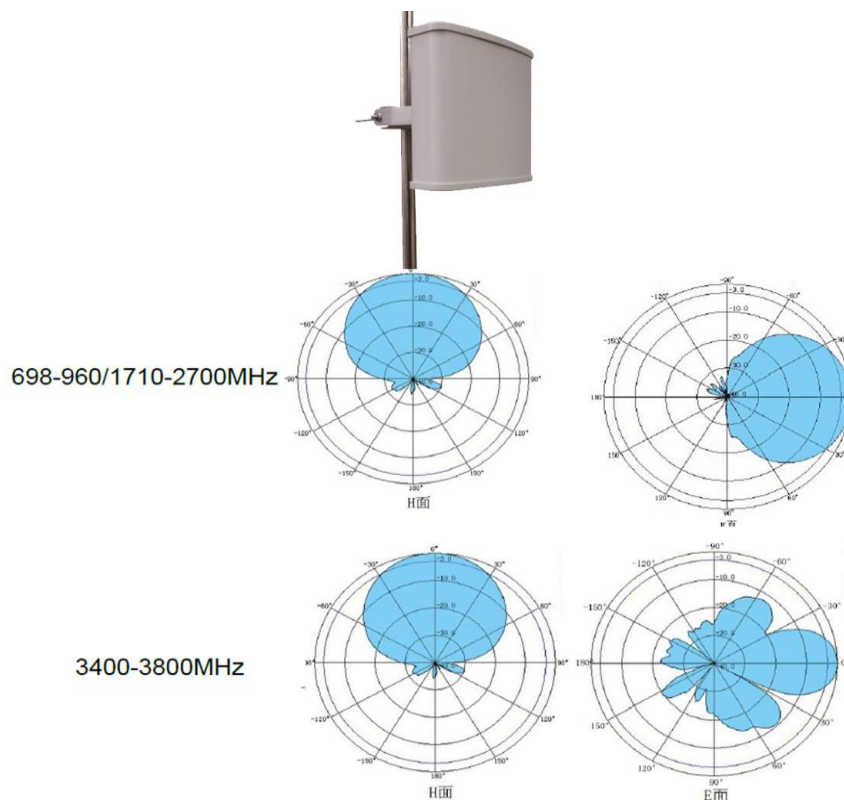
Electrical properties

Input Power per Port, maximum (W)	120		
Impedance (Ω)	50		
Intermodulación (3er orden @ 2 x 43 dBm) (dBc)	< -153		
Frequency range (MHz)	698-960	1710-2700	3400-3800
Connectors	4 x 4.3 - 10	4 x 4.3 - 10	
Gain (dBi)	8	8	10
Polarization	± 45 °		
Horizontal beam width (°)	65 ± 5		
Vertical beam width (°)	55 ± 5	55 ± 5	40 ± 5
VSWR	≤ 2		
Front to Back Ratio (dB)	≥ 25		
Cross-Polar Discrimination (dB)	≥ 21	≥ 21	≥ 19

Reference

400507

Image



* MCC reserves the right to make the changes considered necessary in this document.